

Band Placement Auditions

It is important that you spend time preparing the music for your audition. Part of the chair placement audition process is showing effort and desire by demonstrating you have adequately prepared the music.

1. Chromatic Scale

- Play a chromatic scale the full range of your instrument of which you are capable. Start from your best lowest sounding note and play up to your best highest sounding note. Then play back down the scale (2 octaves if possible).
- Play the chromatic scale, one quarter note per pitch at 120 beats per minute. Slur the notes going up the scale and tongue the notes coming down.

1. Major Scale

- Play the F Major scale in 1 octave (2 octaves if possible).
- Play the major scale, one quarter note per pitch at 120 beats per minute. Slur going up the scale and tongue coming down.

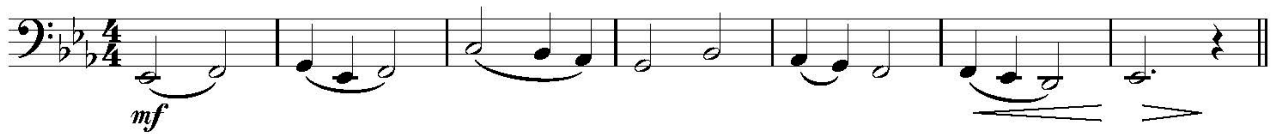
2. Prepared Excerpt

- Play the excerpt below following all tempo, expression and articulation markings. *Check key signatures carefully!!*

Excerpt

Tuba

Moderato ♩=80 (suggested)
Theme



8 Variation 1



13 Variation 2

